



25605 S. Arizona Ave. Chandler, AZ 85248 Tel: 800-VITA-SPA (848-2772) Fax: 954-374-9177
 For dealer information call: 1-800-VITA-SPA (848-2772) or for outside of the USA 954.639.7855





PEACE

Welcome to the world of Vita Spa, it's much closer than you think. Only foot steps away...just outside your backdoor...your own personal spa. This is a place where serenity and peace reign. Stress and anxiety are somewhere else...far, far away. Your aching body will find restoration here, and healing waters will massage and renew your sore muscles. They say the fountain of youth exists only in myth. We say, they just haven't been here.

For over 30 years, Vita Spa has been synonymous with quality, comfort, value and innovation. We strive to continue the tradition.

Your satisfaction is important to us.



Your own personal spa

Hydrotherapy

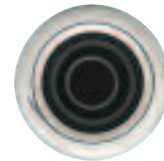
Heat, buoyancy and massage

It's called Hydrotherapy, and it's at work in a Vita Spa. Hop in, shift gears and just for a while let the world stand still. So much more than just a hot tub, a Vita Spa is like a personal masseuse.



These jets were made for healing.

Whether it's the stress of the day, sleepless nights and overworked muscles, Vita Spa's jets were designed to heal. Think of them as the strong, agile fingers of a seasoned masseuse waiting to work those aches and pains away. Our jets offer a variety of effects and are completely adjustable to satisfy your own individual needs. Be it light, swirling massages, to deep penetrating ones, pulsating jet streams or a soothing whirlpool action, once you experience the natural healing power of our jets, you'll be left wondering how you ever got by without them.



Turbo Whirlpool

Used to create whirlpool action in the spa this jet also provides our most powerful massage.



Select-A-Swirl™

Swirling or direct, kneading massage. With the Select-A-Swirl's fully adjustable jet, you can select from a kneading massage back to an invigorating deep tissue massage.



Twin-Spin Pulsator

Imagine streams of water rhythmically pulsating sore muscles and joints promoting blood flow and circulation that will relieve pain and stiffness.



Vortex Stream Plus™

A powerful jet that results in strong, streams that soothe even the most overworked muscles.



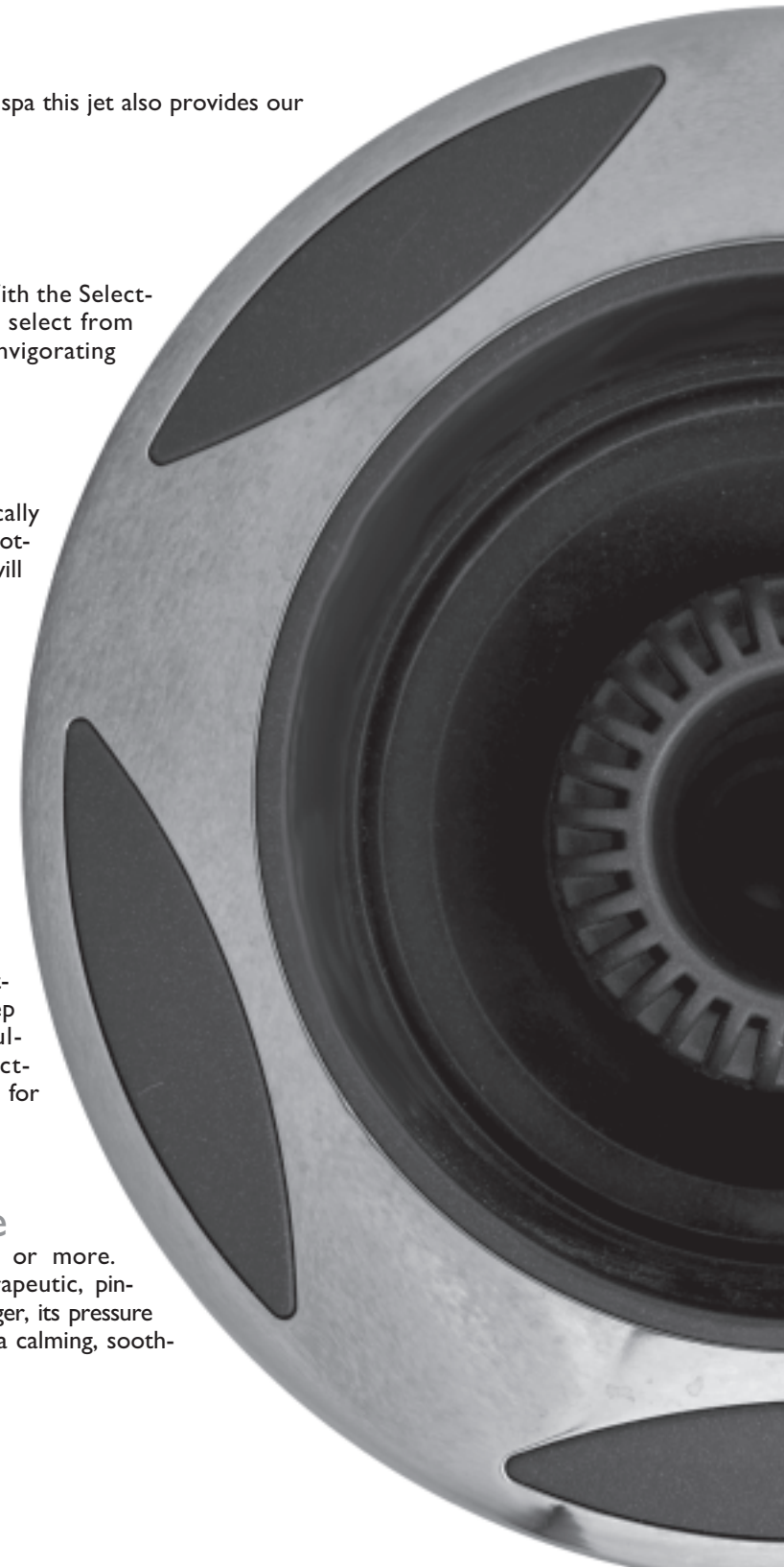
Tension Ease

Indulge yourself as this jet gives a targeted massaging action to penetrate deep into your upper back, neck, and shoulders, where your body is most affected by tension. Individually adjustable for maximum enjoyment.



Cluster / Acupressure

These jets appear in groups of two or more. Cluster jets provide a vigorous, therapeutic, pinpoint of pressure. With a twist of a finger, its pressure can be adjusted from a strong stream to a calming, soothing massage.



Complete Massage

A Vita Spa is designed to deliver a complete back massage like you would get at a massage clinic. In a complete back massage there are five movements or techniques that are commonly performed to improve circulation, relieve tension and relax. These are; effleurage, petrisage, tapotement, circular friction and vibratory. Your Vita Spa utilizes different types of jets in specific configurations throughout the spa to deliver these treatments.

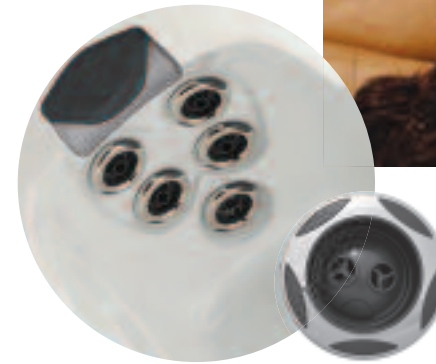
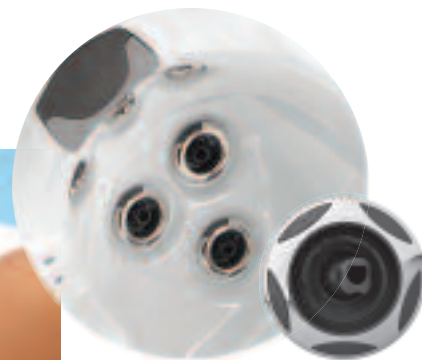
Effleurage

Effleurage: this is a sliding or gliding massage performed along the back in a continuous motion. Effleurage is both extremely relaxing and healing. This treatment is accomplished using jets designed to flow water upwards along the back. There are three different arrays for a complete effleurage massage.



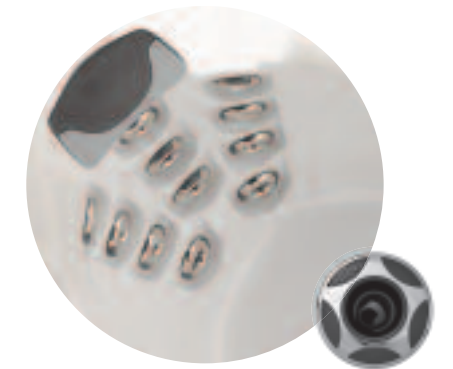
Petrisage

This is a french word that means “kneading”. This treatment is done by larger swirling jets in various locations in the seats that swirl and knead the back. A petrisage treatment relieves tension and pain locked deep in the muscles.



Tapotement

This treatment is a rhythmic tapping using the edges of the hands or lightly with the palms. Tapotement is done using specially designed jets placed in a variety of seats that pulse the water to deliver this effect. A tapotement massage promotes blood flow and circulation to help the body carry away toxins and acids that can build up and cause pain and stiffness.



Circular Friction

This is also called cross fiber massage and is achieved by precise and powerful circular jets that deliver this effect in a variety of positions according to where they are located in the spa. A circular or “cross fiber” treatment unlocks stiff and tired muscles to relieve stress and increase mobility.



Vibration/Shaking

This treatment is used to stimulate blood flow over the entire body all at once and aid the body to remove oxidants and acids that can cause stiffness and pain. The Champagne Air system option effectively vibrates the water all around the bather to produce an effective and relieving treatment.



Reflexology

In addition to the “complete massage” provided by the Vita jetting systems, hand and foot massage systems are included for a “reflexology” type of treatment. Reflexology targets the nerve endings in the hands and feet that are connected to the entire body. Effectively massaging these areas is one of the keys to relaxing the entire body.

Sometimes it's the little things

Like SenFlo™, a Vita exclusive which uses Sen modules in the spa design to massage and stimulate feet and hands. Experience the amazing feeling of SenFlo Therapy.

Features and Choices

creating the perfect spa

The Symphonic Wave seat

Pinpoint the parts of your body in need of most relief with accurate precision. Zone-by-zone, this seat sequentially provides a vigorous massage directly to the neck, shoulder, and upper and lower areas of your back. Controlling speed and sequence is as simple as a touch of your fingertip.

Standard on the Rendezvous and Mystique.



The Zone.

Each zone has been painstakingly designed to provide you with intense relief and absolute pleasure.

Zone A: Targets neck and shoulders, relieving stiffness.

Zone B: Directs a vigorous massage to the upper back.

Zone C: Targets sore, strained middle back muscles.

Zone D: Relieves lower back pain.



Superior Quality

The steel structure design in Vita Spa hot tubs 700 and 500 series allows for complete service of the entire structure and all mechanical parts. Essentially the spa can be serviced and brought back to factory specifications right in your backyard. We call this feature "appliance grade". It is important to consider the serviceability of your hot tub, just as you would in any other home appliance.



Lifetime Steel Structure Warranty

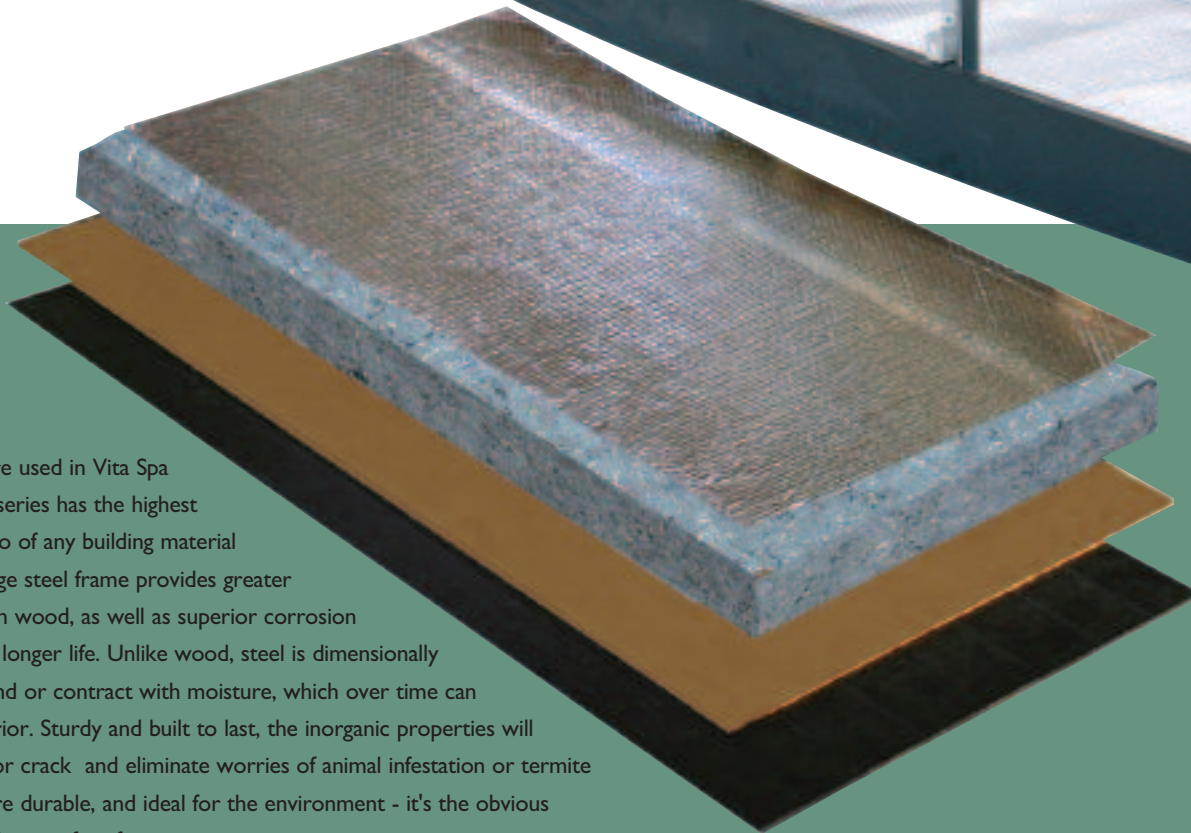
The steel frame is the backbone and support for the entire spa. The Steel Structure of your Vita Spa hot tub carries a lifetime warranty. This means for the lifetime of your ownership you can feel secure knowing any component of the structural frame will be replaced or fixed to factory specifications should it become damaged in the operation of the spa.

- 40% lighter, yet 250% stronger than traditional wood frames.
- Weatherproof
- Corrosion-free



ABS Sealed Base

The **ABS Sealed Base** is an integral part of the support structure in a Vita Spa hot tub. Its one-piece construction provides a rugged foundation that seals the bottom of the spa, locking in heat and sealing out moisture.



Steel Sub-Structure

The Steel Sub-Structure used in Vita Spa hot tubs 700 and 500 series has the highest strength to weight ratio of any building material available. The light-gauge steel frame provides greater structural integrity than wood, as well as superior corrosion protection for a much longer life. Unlike wood, steel is dimensionally stable. It will not expand or contract with moisture, which over time can damage the spa's exterior. Sturdy and built to last, the inorganic properties will never rot, warp, split or crack and eliminate worries of animal infestation or termite damage. Stronger, more durable, and ideal for the environment - it's the obvious choice for a lifetime of worry-free fun.

Service

Should your Vita Spa appliance grade hot tub ever need maintenance, it can be serviced and put completely back together to factory specifications. This is not possible with conventional foam-filled hot tubs as they are extremely hard to service and are typically damaged in the process. It is very costly to bring these older designs back to factory installation specifications.

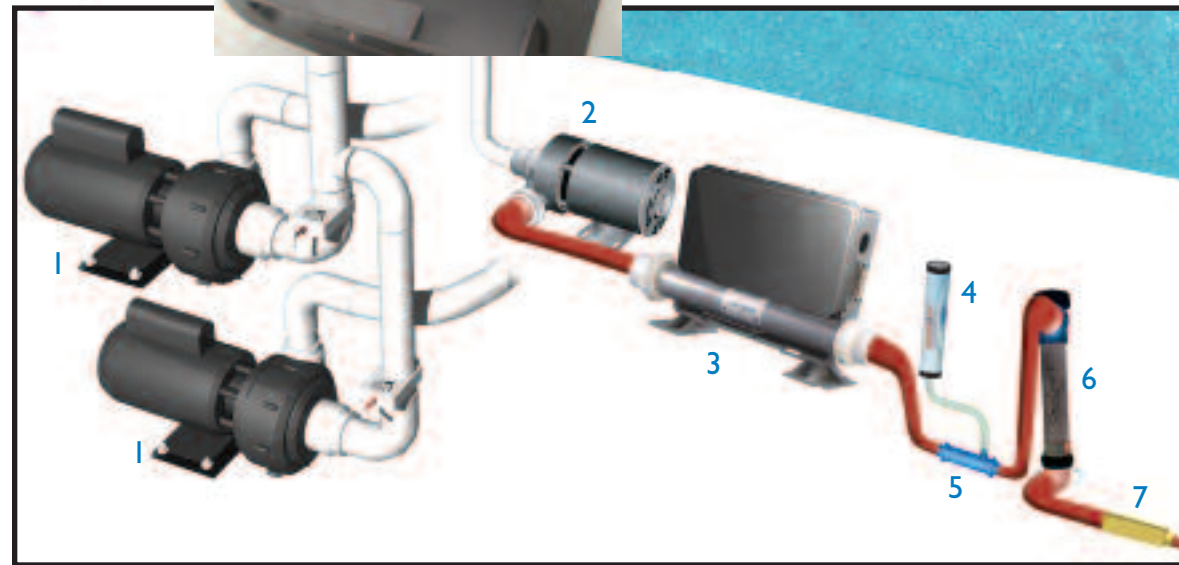
Servicing a Foamed Filled Spa



Submerge yourself in purity.

The Vita Spa 700 Series Filtration System

Our dual filtering system ensures that all of the water passes through the filter before it re-enters the spa. The first filter is driven by the powerful jet pumps, which rapidly circulates large amounts of water back into the spa. The second filter, works with the 24 hour circulation pump, incorporating our special cartridge element which filters out debris and particles. The ozonator oxidizes bacteria in the water while the UVC light neutralizes hard to kill bacterias. What does this all mean? Crystal clear water, minimal maintenance and a healthy, purifying experience for you. (Standard on all 700 series spas.)



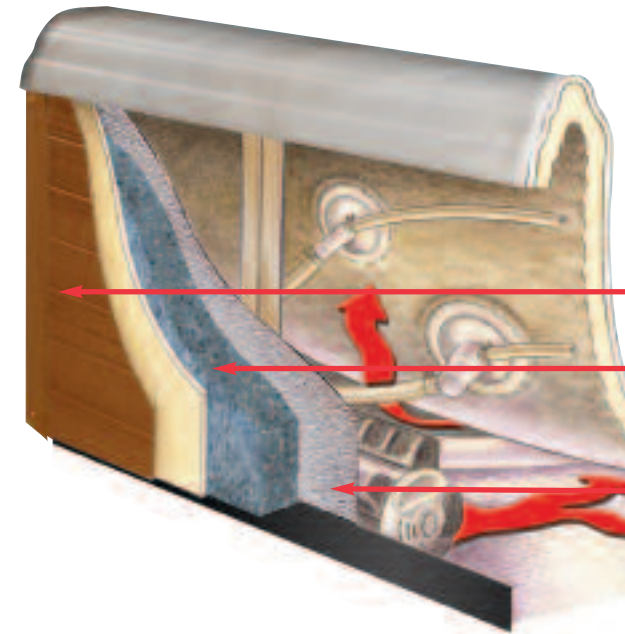
- 1. Primary and secondary jet pumps
- 2. 24 Hr circulation pump
- 3. Integrated Control System with Worry-Free Heater
- 4. Ozonator
- 5. VitaZone injector and mixing valve
- 6. CleanZone™ II UV System
- 7. Ozone Bubble Buster

The Power of Ozone and UV

We've taken our cue from Nature combining the benefits of ozone and UV light. The purification process starts with 100% continuous filtration. This means all the water is continually being filtered and purified. The use of UVC light is the same technology utilized in many communities around the world to purify drinking water. The ozone system is used to oxidize and clean your spa water. This high quality of water is one of the most important features to consider when evaluating a spa.



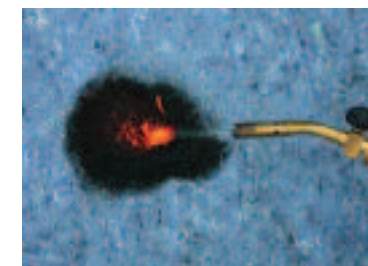
Vital Energy



- Excel-X® Siding
- Recycled Green Insulation
- Radiant Heat Reflective Insulation

Vital Energy Insulation System

The Vital Energy Insulation System features eco-friendly recycled insulation. Made from recycled natural fiber, it is approved by the U.S. Green Building Council. The insulation contains no chemical irritants, is treated with a borate-based solution to prevent mold/mildew growth, pest infestation, and acts as a fire retardant. Vital Energy replaces urethane foam commonly used in "foam filled" hot tubs. The "foam filling" process in conventional spas can produce as much as 50 lbs of volatile organic components (VOC's) which are harmful to the environment.



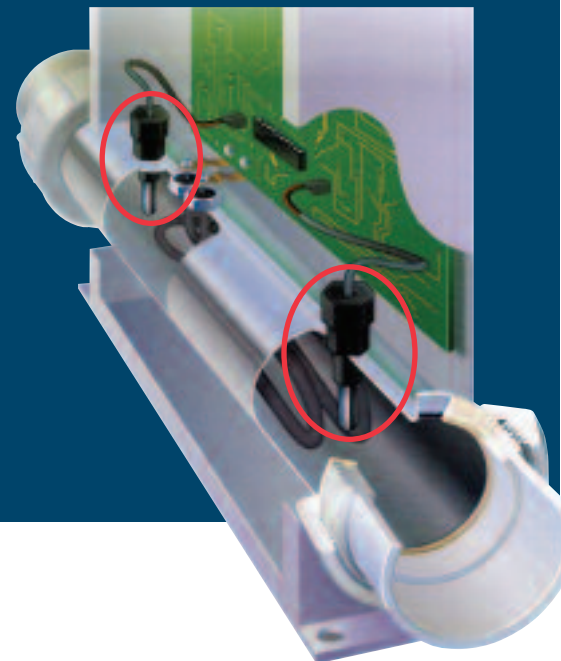
Torch at approx. 5,000°F





Powerpack with M7 Technology

An advanced, state of the art spa controller provides the ultimate in ease of use, safety and reliability for every spa user. The Powerpack with M7 technology is a revolutionary new hardware/software platform that completely eliminates mechanical sensor switches and remote through-wall temperature sensors. The M7 platform features two identical solid state sensors that mount inside the heater manifold. These "Smart Sensors" accurately and reliably measure water temperature while monitoring critical water conditions without the possibility of failure due to mechanical switch malfunction.



Truly in control.

Our control pad allows you to turn on your spa, control heat and its jets with a simple touch. But it doesn't stop there, The advanced technology provides you with many key features to enhance the use of your spa. Features such as our reversible display, which allows you, with a simple touch of a finger, to reverse the spa panel so that it reads from the inside or outside of the spa. You can actually program the exact day and time of filtration and heat for those party nights, our control lockout feature ensures that your spa settings stay yours.



700 and 500 Series Control Pad

The industry's most imaginative and technologically advanced control system. On-screen graphics and easy-to-read text makes this new control pad a consumer favorite. Standard on 700 and 500 Series.



300 Series Control Pad

This consumer friendly control pad offers LCD "day and night" display, is easy to operate, and contains solid state marine grade components.



56 Frame Pump

Vita Spa hot tubs utilize industrial duty 56 frame pumps in all of their 240 volt models. The 56 frame motor is larger, more powerful and delivers higher water flow for better jet performance than the 48 frame motors found in most spas. They also run cooler for longer life and have lower amp draw for lower operating costs.



Product lineup | 700 series

Mystique

Every feature, every curve, every seat, every detail of the Mystique is designed with you in mind. Appointed with fountains and lighting enhancements, the Mystique is a marvel of function and technology. Our largest hydrotherapy spa has something for everyone. An air induction system will soothe your body with soft caressing bubbles and the lounge is equipped with our exclusive Symphonic Wave Seat feature. There is no mystery, this is the spa for you.

Seating: 6 Occupants
 Size (LxWxH): 90" x 114" x 38"
 229 x 290 x 96.5 cm
 Weight Dry/Wet: 935 / 4943 lbs.
 424 / 2242 kg
 Gals/Liters: 480 / 1817
 Pumps: Pump 1 3.0Hp/5.9bHp, 240V, 2Sp
 Pump 2 3.0Hp/5.9bHp, 240V, 2Sp
 Pump 3 3.0Hp/5.9bHp, 240V, 1Sp
 Blower 1.5Hp/3bHp, 1Sp
 Voltage/Amps: 240V/40A/60A
 Total: 60 Jets

- Water Features 2
- Symphonic Wave Seat •
- Stainless Steel Jets •
- AquaGlo •
- VitAroma™ •
- Excel-X™ (Simulated Wood) •
- 24-Hour Filtration •
- Freeze Protection •
- Vital Energy Insulation System •
- Perma-Shield™ Bottom Pan •
- Premier Styled Cover •
- Champagne Air (includes 20 air jets) •
- Ozone •

- Options:**
- Vita Tunes •
 - CleanZone™ II •

Mystique is available in the following acrylic colors



Shown with Champagne Air Jets and optional Vita Tunes.

Rendezvous

With seating for up to 7 people, the Rendezvous is powered by three high powered jet pumps. It features 71 jets with 2 water fountains. This spa boasts exclusive features such as Aromatherapy, the Symphonic Wave Seat, and SenFlo™ therapy making this spa exceptional in every way.

Seating: 6 Occupants
 Size (LxWxH): 92" x 92" x 38"
 234 x 234 x 96.5 cm
 Weight Dry/Wet: 1167 / 4841 lbs.
 529 / 2195 kg
 Gals/Liters: 440 / 1,665
 Pumps: Pump 1 3.0Hp/5.9bHp, 240V, 2Sp
 Pump 2 3.0Hp/5.9bHp, 240V, 2Sp
 Pump 3 3.0Hp/5.9bHp, 240V, 1Sp
 Voltage/Amps: 240V/40A/60A
 Total: 71 Jets

- Water Features 2
- Symphonic Wave Seat •
- Stainless Steel Jets •
- AquaGlo •
- VitAroma™ •
- Excel-X™ (Simulated Wood) •
- 24-Hour Filtration •
- Freeze Protection •
- Vital Energy Insulation System •
- Perma-Shield™ Bottom Pan •
- Premier Styled Cover •
- Ozone •

- Options:**
- Vita Tunes •
 - Champagne Air (includes 20 air jets) •
 - CleanZone™ II •



Shown with optional Vita Tunes



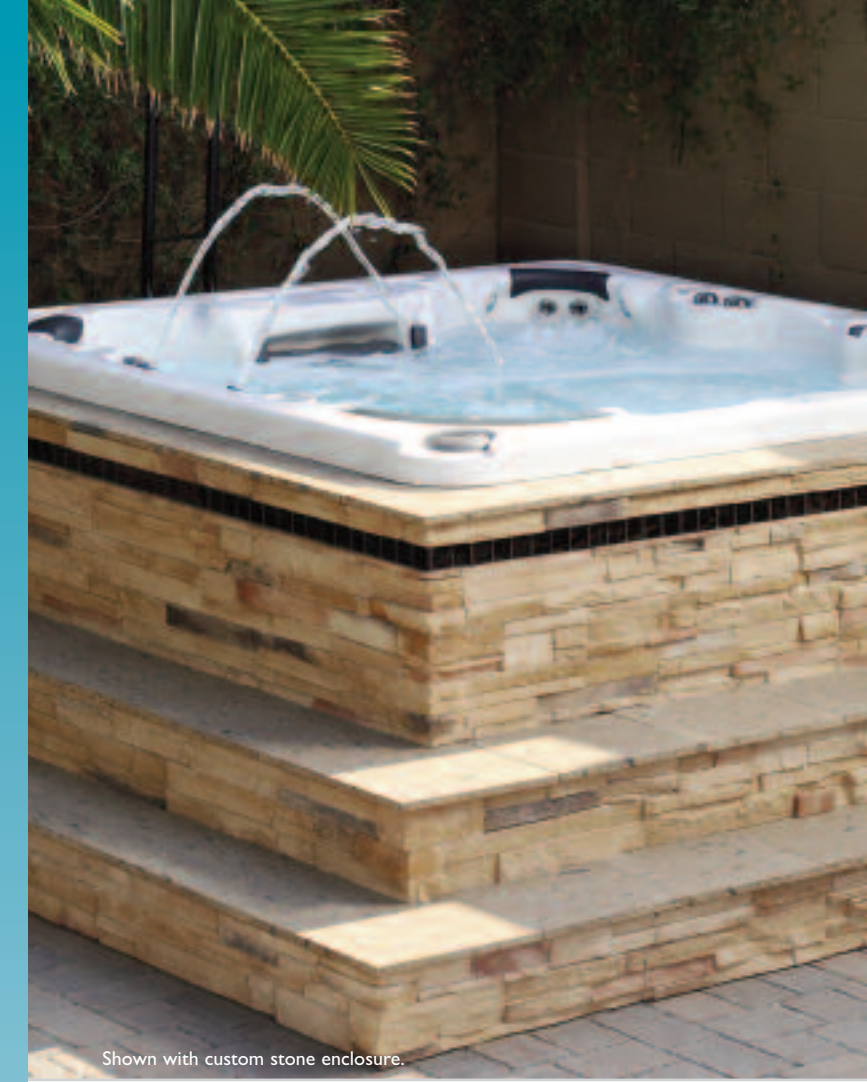
Product lineup | 700 series

Cabaret

Classic styling, spacious and unique, the Cabaret has it all. With 54 therapy jets and 2 water features, it's easy to see why the Cabaret is such a popular model. Just add your favorite VitAroma scent, select your favorite color with our exclusive AquaGlo™ feature, then drift away to your special place.

Nuage

The Nuage gives you a reason to stay home. Offering barrier free seating for up to seven, the Nuage's high powered therapy pumps deliver a full-action, deep muscle massage. It features four corner seats including Vita's exclusive Whitewater seat and a comfortably placed foot dome, ensuring the maximum in hydrotherapy and comfort. A perfect spa for entertaining.



Shown with custom stone enclosure.



Seating: 6-7 Occupants
 Size (LxWxH): 92" x 92" x 38"
 234 x 234 x 96.5 cm
 Weight Dry/Wet: 972 / 4395 lbs.
 440 / 1993 kg
 Gals/Liters: 410 / 1,552
 Pumps: Pump 1 3.0Hp/5.9bHp, 240V, 2Sp
 Pump 2 3.0Hp/5.9bHp, 240V, 2Sp
 Voltage/Amps: 240V/40A/60A
 Total: 54 Jets

- Water Features 2
- Stainless Steel Jets •
- AquaGlo •
- VitAroma™ •
- Excel-X™ (Simulated Wood) •
- 24-Hour Filtration •
- Freeze Protection •
- Vital Energy Insulation System •
- Perma-Shield™ Bottom Pan •
- Premier Styled Cover •
- Ozone •

- Options:
- Vita Tunes •
 - Champagne Air (includes 10 air jets) •
 - CleanZone™ II •

Seating: 6-7 Occupants
 Size (LxWxH): 83" x 83" x 38"
 211 x 211 x 96.5 cm
 Weight Dry/Wet: 957 / 4205 lbs.
 434 / 1907 kg
 Gals/Liters: 389 / 1,472
 Pumps: Pump 1 3.0Hp/5.9bHp, 240V, 2Sp
 Pump 2 3.0Hp/5.9bHp, 240V, 2Sp
 Voltage/Amps: 240V/40A/60A
 Total: 44 Jets

- Water Features 2
- Stainless Steel Jets •
- AquaGlo •
- VitAroma™ •
- Excel-X™ (Simulated Wood) •
- 24-Hour Filtration •
- Freeze Protection •
- Vital Energy Insulation System •
- Perma-Shield™ Bottom Pan •
- Premier Styled Cover •
- Ozone •

- Options:
- Vita Tunes •
 - Champagne Air (includes 10 air jets) •
 - CleanZone™ II •



Shown with optional Vita Tunes.

Shown with optional Vita Tunes.



Product lineup | 700 series

Chateau

Our most popular model, the Chateau creates a soothing and tranquil setting for you to escape to. But it's not just for one, you should invite your friends. 45 water jets will pamper and soothe every muscle of your body. The Chateau boasts our most comfortable lounge seat.

Seating: 5-6 Occupants
 Size (LxWxH): 83" x 83" x 38"
 211 x 211 x 96.5 cm
 Weight Dry/Wet: 936 / 3507 lbs.
 424 / 1590 kg
 Gals/Liters: 308 / 1,165
 Pumps: Pump 1 3.0Hp/5.9bHp, 240V, 2Sp
 Pump 2 3.0Hp/5.9bHp, 240V, 2Sp
 Voltage/Amps: 240V/40A/60A
 Total: 45 Jets

- Water Features 2
- AquaGlo •
- VitAroma™ •
- Excel-X™ (Simulated Wood) •
- 24-Hour Filtration •
- Freeze Protection •
- Vital Energy Insulation System •
- Perma-Shield™ Bottom Pan •
- Premier Styled Cover •
- Stainless Steel Jets •
- Ozone •

- Options:
- Vita Tunes •
 - Champagne Air (includes 10 air jets) •
 - CleanZone™ II •

Fontaine

The Fontaine was designed to transform your backyard into the perfect spa retreat. With a little imagination you can integrate this modern design hot tub into your modern backyard. Add your own personal touch to the look by incorporating decorative elements into the patented exhibition edge. As the Fontaine becomes the center piece of your retreat, it also provides hydrotherapy. Enjoy the beauty of this modern work of art as you slip into its therapeutic waters.

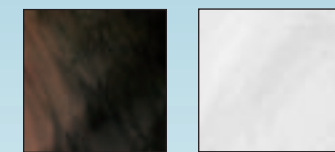
Seating: 6 Occupants
 Size (LxWxH): 91.5" x 91.5" x 35"
 232 x 232 x 89 cm
 Weight Dry/Wet: 898 / 4085 lbs.
 407 / 1853 kg
 Gals/Liters: 420 / 1,590
 Pumps: Pump 1 3.0Hp/5.9bHp, 240V, 2Sp
 Pump 2 3.0Hp/5.9bHp, 240V, 2Sp
 Cascade Pump 1.0Hp 115V, 1Sp
 Voltage/Amps: 240V/40A/60A
 Total: 51 Jets

- Water Features 4
- Excel-X™ (Simulated Wood) •
- Freeze Protection •
- Vital Energy Insulation System •
- Perma-Shield™ Bottom Pan •
- Premier Styled Cover •
- Stainless Steel Jets •
- Ozone •

- Options:
- Blue Tooth Stereo •
 - CleanZone™ II •
 - Pedestal Lights •

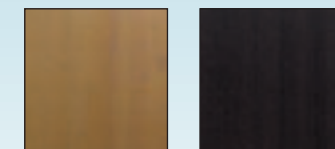
Fontaine is available in the following acrylic colors

Sunset Silver Marble



Fontaine is available with the following siding colors

Teak Mocha



Shown with optional Vita Tunes.

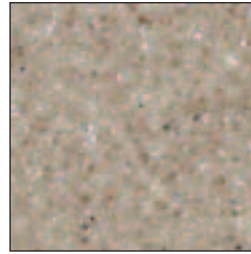


Shown with optional Blue Tooth stereo.

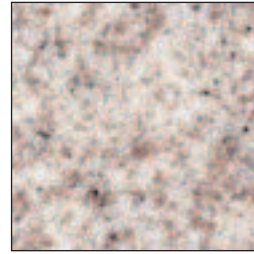


Acrylic Colors

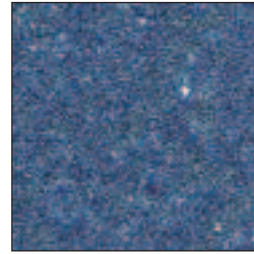
Desert



Sahara



Denim



Latte



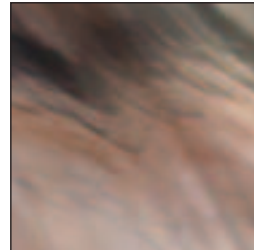
Linen



Gypsum



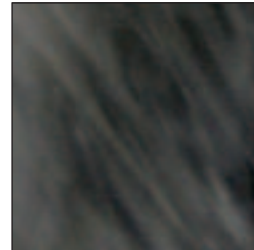
Tuscan Sun



Silver Marble



Midnight Opal



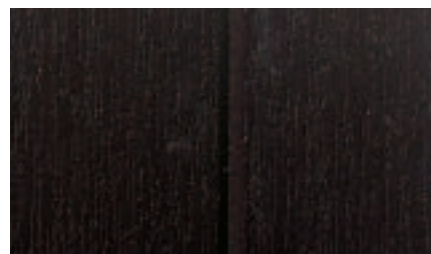
Teak



Gray



Mocha



Excel-X™

Made out of a high impact composite, Excel-X™ looks and feels like real natural wood. Excel-X is ecologically friendly, doesn't weather or stain, and is virtually maintenance free. Doesn't that make you feel better? Available in Teak, Gray and Mocha.

Exclusive features.



VitAroma

Aromatherapy revisited. Specially designed jets infuse the air with fragrance, sedating the mind, arousing the senses, easing the body, leaving behind no oily film or residue. Would you like to sit in a meadow of wild flowers? Drift on a pillow of lavender? VitAroma can take you there. By using the extracts of pure essential oils from herbs, plants, and flowers, we've incorporated the health-promoting qualities of aromatherapy into our VitAroma air massage therapy. Drop any one of our four aromatic fragrance canisters in the VitAroma dispenser and the fragrance fills the air. It's as simple as that.



Product lineup | 500 series

Seating: 3 Occupants
 Size (LxWxH): 66" x 83" x 30.5" 168 x 211 x 77 cm
 Weight Dry/Wet: 510 / 2070 lbs. 231 / 939 kg
 Gals/Liters: 195 / 740
 Pumps: Pump 1 3.0Hp/5.9bHp, 240V, 2Sp
 Voltage/Amps: 240V/30A/40A
 Total: 19 Jets

Water Features 0
 Aqua Burst™ Plus •
 Excel-X™ (Simulated Wood) •
 Freeze Protection •
 Vital Energy Insulation System •
 Perma-Shield™ Bottom Pan •
 Premier Styled Cover •
 Stainless Steel Jets •

Options:
 Champagne Air (includes 14 air jets) •
 Ozone •

Seating: 4 Occupants
 Size (LxWxH): 82" x 69 1/2" x 32" 208 x 177 x 81 cm
 Weight Dry/Wet: 792 / 2871 lbs. 359 / 1302 kg
 Gals/Liters: 249 / 942
 Pumps: Pump 1 3.0Hp/5.9bHp, 240V, 2Sp
 Pump 2 3.0Hp/5.9bHp, 240V, 1Sp
 Voltage/Amps: 240V/40A/60A
 Total: 44 Jets

Water Features 2
 AquaGlo •
 VitAroma™ •
 Excel-X™ (Simulated Wood) •
 24-Hour Filtration •
 Freeze Protection •
 Vital Energy Insulation System •
 Perma-Shield™ Bottom Pan •
 Premier Styled Cover •
 Stainless Steel Jets •

Options:
 Surround Sound MP3 Stereo •
 Champagne Air (includes 10 air jets) •
 Ozone •
 Circ Pump •

Trio



Joli



Shown with optional Vita Tunes.

Envie



Shown with optional Surround Sound MP3 Stereo.

Seating: 6 Occupants
 Size (LxWxH): 92" x 92" x 38" 234 x 234 x 96.5 cm
 Weight Dry /Wet: 979 / 4235 lbs. 444 / 1920 kg
 Gals/Liters: 390 / 1476
 Pumps: Pump 1 3.0Hp/5.9bHp, 240V, 2Sp
 Pump 2 3.0Hp/5.9bHp, 240V, 1Sp
 Voltage/Amps: 240V/40A/60A
 Jets: 54

Water Features 2
 Aqua Burst™ Plus •
 Excel-X™ (Simulated Wood) •
 Freeze Protection •
 Vital Energy Insulation System •
 Perma-Shield™ Bottom Pan •
 Premier Styled Cover •
 Stainless Steel Jets •

Options:
 Champagne Air/VitAroma (includes 10 air jets) •
 Circ Pump •
 Ozone •
 Surround Sound MP3 Stereo •
 CleanZone™ II •

Seating: 6 Occupants
 Size (LxWxH): 84" x 84" x 38" 213 x 213 x 96.5 cm
 Weight Dry/Wet: 868 / 3857 lbs. 393 / 1749 kg
 Gals/Liters: 358 / 1355
 Pumps: Pump 1 3.0Hp/5.9bHp, 240V, 2Sp
 Pump 2 3.0Hp/5.9bHp, 240V, 1Sp
 Voltage/Amps: 240V/40A/60A
 Jets: 52

Water Features 2
 Aqua Burst™ Plus •
 Excel-X™ (Simulated Wood) •
 Freeze Protection •
 Vital Energy Insulation System •
 Perma-Shield™ Bottom Pan •
 Premier Styled Cover •
 Stainless Steel Jets •

Options:
 Champagne Air/VitAroma (includes 10 air jets) •
 Circ Pump •
 Ozone •
 Surround Sound MP3 Stereo •
 CleanZone™ II •

Prestige



Shown with optional Surround Sound MP3 Stereo.

Grand



Shown with optional Surround Sound MP3 Stereo.

Seating: 6-7 Occupants
 Size (LxWxH): 92" x 92" x 38" 234 x 234 x 96.5 cm
 Weight Dry /Wet: 962 / 4135 lbs. 436 / 1875 kg
 Gals/Liters: 380 / 1438
 Pumps: Pump 1 3.0Hp/5.9bHp, 240V, 2Sp
 Pump 2 3.0Hp/5.9bHp, 240V, 1Sp
 Voltage/Amps: 240V/40A/60A
 Jets: 53

Water Features 2
 Aqua Burst™ Plus •
 Excel-X™ (Simulated Wood) •
 Freeze Protection •
 Vital Energy Insulation System •
 Perma-Shield™ Bottom Pan •
 Premier Styled Cover •
 Stainless Steel Jets •

Options:
 Champagne Air/VitAroma (includes 10 air jets) •
 Circ Pump •
 Ozone •
 Surround Sound MP3 Stereo •
 CleanZone™ II •

Seating: 6-7 Occupants
 Size (LxWxH): 84" x 84" x 38" 213 x 213 x 96.5 cm
 Weight Dry/Wet: 870 / 3308 lbs. 394 / 1500 kg
 Gals/Liters: 292 / 1105
 Pumps: Pump 1 3.0Hp/5.9bHp, 240V, 2Sp
 Pump 2 3.0Hp/5.9bHp, 240V, 1Sp
 Voltage/Amps: 240V/40A/60A
 Jets: 49

Water Features 2
 Aqua Burst™ Plus •
 Excel-X™ (Simulated Wood) •
 Freeze Protection •
 Vital Energy Insulation System •
 Perma-Shield™ Bottom Pan •
 Premier Styled Cover •
 Stainless Steel Jets •

Options:
 Champagne Air/VitAroma (includes 10 air jets) •
 Circ Pump •
 Ozone •
 Surround Sound MP3 Stereo •
 CleanZone™ II •

Monarque



Shown with optional Surround Sound MP3 Stereo.

Product lineup | 500 series

Elegant



Shown with optional Surround Sound MP3 Stereo.

Seating: 5 Occupants
 Size (LxWxH): 78 1/2" x 83" x 37" 200 x 211 x 94 cm
 Weight Dry/Wet: 749 / 3370 lbs. 339 / 1528 kg
 Gals/Liters: 314 / 1188
 Pumps: Pump 1 2.5Hp/4.8bHp, 240V, 2Sp
 Pump 2 2.5Hp/4.8bHp, 240V, 1Sp
 Voltage/Amps: 240V/40A/60A
 Jets: 39

Water Features: |
 Aqua Burst™ Plus •
 Excel-X™ •
 Freeze Protection •
 Vital Energy Insulation System •
 Perma-Shield™ Bottom •
 Premier Styled Cover •
 Stainless Steel Jets •

Options:
 Champagne Air/VitAroma (includes 10 air jets) •
 Circ Pump (220V only) •
 Ozone •
 Surround Sound MP3 Stereo •

Seating: 5 Occupants
 Size (LxWxH): 81" diameter x 35" 205 x 89 cm
 Weight Dry/Wet: 575 / 2555 lbs. 260 / 1158 kg
 Gals/Liters: 240 / 908
 Pumps: Pump 1 1.5Hp/2.8bHp, 240V, 2Sp
 Voltage/Amps: 240V/30A/50A
 Jets: 16

Water Features |
 Aqua Burst™ •
 Excel-X™ (Simulated Wood) •
 Freeze Protection •
 Vital Energy Insulation System •
 Perma-Shield™ Bottom •
 Premier Styled Cover •
 Stainless Steel Jets •

Options:
 Ozone •

Seating: 2 Occupants
 Size (LxWxH): 84" x 48" x 30" 214 x 122 x 73 cm
 Weight Dry/Wet: 396 / 1364 lbs. 179 / 618 kg
 Gals/Liters: 116 / 439
 Pumps: Pump 1 1.5Hp/3.0bHp, 115V, 2Sp
 Voltage/Amps: 120V/15A
 Jets: 15

Water Features |
 Excel-X™ (Simulated Wood) •
 Freeze Protection •
 Vital Energy Insulation System •
 Perma-Shield™ Bottom •
 Premier Styled Cover •

Options:
 Ozone •
 Stainless Steel Jets •

Intrigue



Shown with optional Surround Sound MP3 Stereo.

Seating: 5 Occupants
 Size (LxWxH): 78 1/2" x 83" x 37" 200 x 211 x 94 cm
 Weight Dry/Wet: 749 / 3370 lbs. 339 / 1528 kg
 Gals/Liters: 314 / 1188
 Pumps: Pump 1 3.0Hp/5.9bHp, 240V, 2Sp
 Voltage/Amps: 240V/40A/50A
 Jets: 33

Water Features |
 Aqua Burst™ •
 Excel-X™ (Simulated Wood) •
 Freeze Protection •
 Vital Energy Insulation System •
 Perma-Shield™ Bottom •
 Premier Styled Cover •
 Stainless Steel Jets •

Options:
 Champagne Air/VitAroma (includes 10 air jets) •
 Circ Pump (220V only) •
 Ozone •
 Surround Sound MP3 Stereo •

Seating: 2 Occupants
 Size (LxWxH): 78" x 66.5" x 30" 198 x 169 x 76 cm
 Weight Dry/Wet: 469 / 1638 lbs. 212 / 742 kg
 Gals/Liters: 140 / 529
 Pumps: Pump 1 2.5Hp/4.8bHp, 240V, 2Sp
 Voltage/Amps: 240V/40A/50A
 Jets: 23

Water Features |
 Aqua Burst™ •
 Excel-X™ (Simulated Wood) •
 Freeze Protection •
 Vital Energy Insulation System •
 Perma-Shield™ Bottom •
 Premier Styled Cover •
 Stainless Steel Jets •

Options:
 Champagne Air/VitAroma (includes 10 air jets) •
 Ozone •

Product lineup 300 series

Cirque



Duet



Amour





The new 100 Series hot tubs from Vita Spa are affordable and beautiful. The modern acrylic construction makes them easy to maintain and durable. Simple to setup and use, your new 100 Series hot tub will relax away your everyday stresses with its plug and play design. All you need to do is plan, place and plug it in and you are ready to relax.

100 Series Cabinets

Thermo-Plastic Siding

Ecologically friendly, high impact resistant, with the real wood grain pattern, doesn't weather or stain, and is virtually maintenance free.



Color Combinations

100 Series models are available in two color combinations.



Option 1 = Silver Marble/Gray. Option 2 = Sahara/Mocha.

Product lineup 100 series

Seating: 4 Occupants
 Size (LxWxH): 82" x 69 1/2" x 32" 208 x 177 x 81 cm
 Weight Dry/Wet: 540 / 2660 lbs. 245 / 1207 kg
 Gals/Liters: 265 / 1003
 Pumps: Pump 1 1.0Hp, 115V, 2Sp
 Voltage/Amps: 120V/15A
 GFCI Cord 15 feet long
 Jets: 22

- Thermo-Plastic Siding
- Freeze Protection
- Vital Energy Insulation System
- Premier Styled Cover

Seating: 4 Occupants
 Size (LxWxH): 79 3/4" x 72 1/2" x 29 1/4" 202 x 184 x 76 cm
 Weight Dry/Wet: 445 / 2550 lbs. 202 / 1157 kg
 Gals/Liters: 255 / 965
 Pumps: Pump 1 1.0Hp, 115V, 2Sp
 Voltage/Amps: 120V/15A
 GFCI Cord 15 Feet Long
 Jets: 22

- Thermo-Plastic Siding
- Freeze Protection
- Vital Energy Insulation System
- Premier Styled Cover

Seating: 5 Occupants
 Size (LxWxH): 84 x 74 1/4" x 34 1/4" 211 x 187 x 87 cm
 Weight Dry/Wet: 495 / 2890 lbs. 225 / 1310 kg
 Gals/Liters: 290 / 1098
 Pumps: Pump 1 1.0Hp, 115V, 2Sp
 Voltage/Amps: 120V/15A
 GFCI Cord 15 Feet Long
 Jets: 27

- Thermo-Plastic Siding
- Freeze Protection
- Vital Energy Insulation System
- Premier Styled Cover

Forte



Voeux



Image





Satisfaction

You've made the right choice.

At Vita Spa, we pursue perfection in all that we create.

The focus of everything we do at Vita Spa is on You. The full and complete satisfaction of our customers is our objective and the result is evident in every spa that we produce. When you purchase a Vita Spa, you can be sure you've made one of the smartest and most worthwhile purchases possible. For over four decades, we have been at the forefront of the hydrotherapy industry in innovation and technology and our spas are rated amongst the best in the world.

Vita Spas can be found in more than 50 countries internationally.

Your well being, peace of mind, and ultimately, your stress free ownership, are our objectives.

Lifetime Insulation Warranty

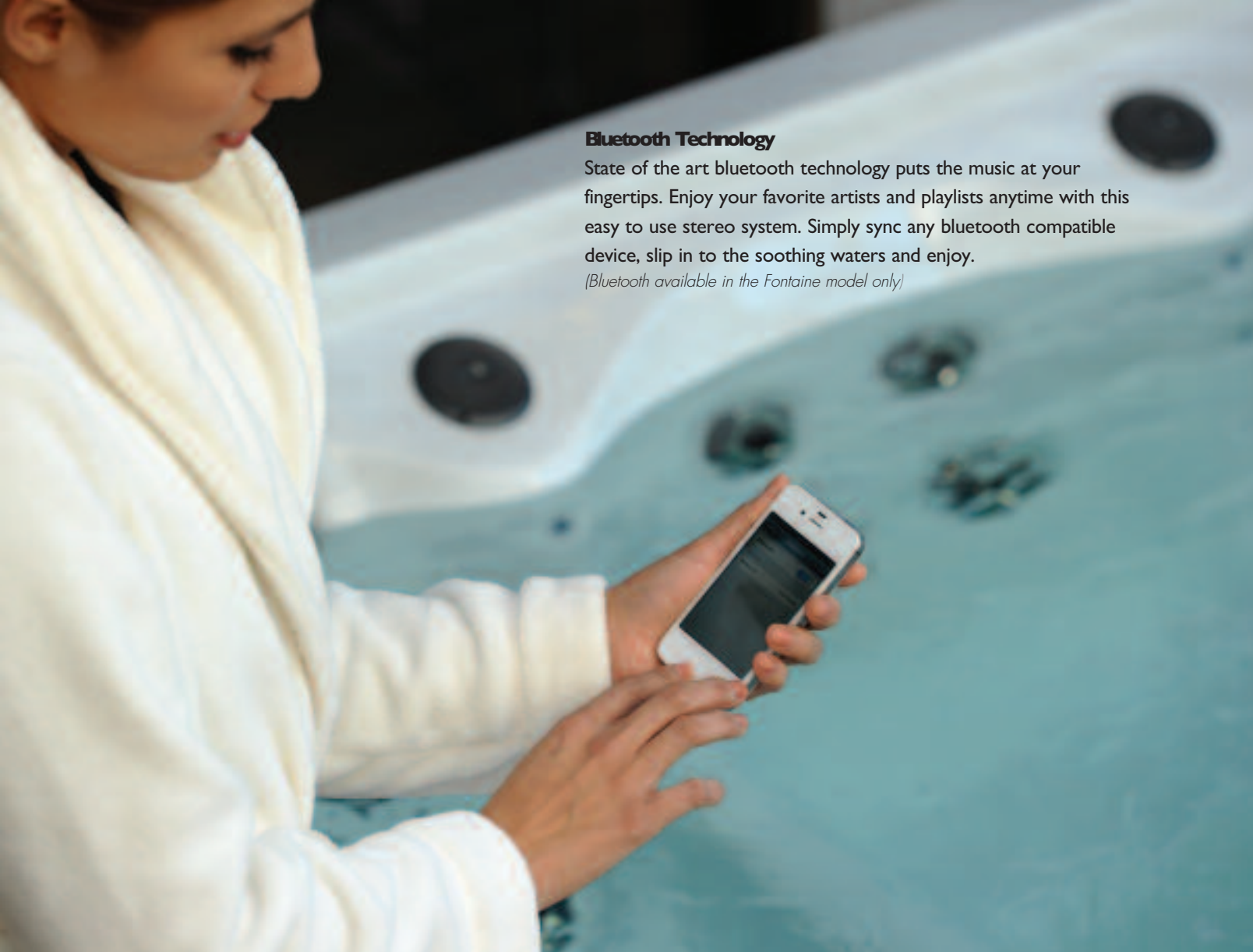
The insulation system in your new Vita Spa hot tub is warranted to maintain the same insulation value as it had at the time it was manufactured. The high R value, appliance grade construction will allow a technician to service the entire spa and bring it back to factory specifications at home, for the lifetime you own your spa. As you enjoy your spa over the years you'll feel secure knowing it can be maintained at the same high level of efficiency as the day it was made.



Best of Class
Spasandhottubs.com is an independent organization which rates spas.

Five star rating from poolandspa.com





Bluetooth Technology

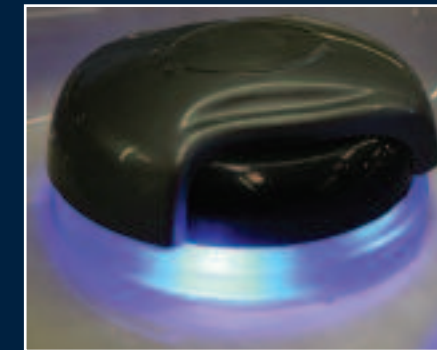
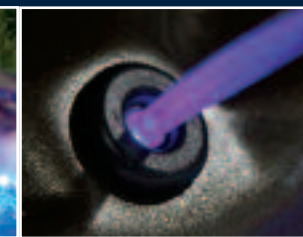
State of the art bluetooth technology puts the music at your fingertips. Enjoy your favorite artists and playlists anytime with this easy to use stereo system. Simply sync any bluetooth compatible device, slip in to the soothing waters and enjoy.

(Bluetooth available in the Fontaine model only)

AquaGlo™

AquaGlo™

Immerse yourself in peaceful warm water as the excitement of sight and sound lull you into seclusion and harbor you from the rigors of the day. Like music, the ever constant flow of water cascades around you while a brilliant exhibition of lighting features relax and rejuvenate. This feeling is called chromatherapy. These things are all components of AquaGlo, a combination of water and light enhancements that truly differentiate the 700 series from an average spa. The following features are all components of AquaGlo.



Illuminated Controls
Diverter valves and air controls are illuminated for easy use in dim lighting situations.

Standard on (700 and 500 Series)

Trevi Fountain

Once only available as an option, this feature is now a standard feature on most 700 an 500 series spas. A true laminar stream of water rises above the waters surface providing a soothing visual and sound effect. The water stream is back lighted for further visual enhancement.

Vita Tunes & Surround Sound

Our thoughtful amenities and superior options provide a level of luxury and pleasure for every sense. Case in point, the auditory indulgence of our optional SONY stereo systems. Both waterproof and corrosion resistant, our speakers boast a crisp, clear sound and an amplification system provides true music fidelity.

Vita Tunes: Sony AM/FM/CD/MP3/Satellite Ready Stereo (700 Series)

Surround Sound: MP3 Stereo System (500 and 300 Series)



Lighted Cup Holders

A comforting dip in a hot tub accompanied by a glass of your favorite beverage is the perfect combination and now, with Vita Spa's lighted glass holders you will never forget where you set that drink.



xStream™ Swim Spas

The new xStream® uses flowing streams of water to create a home environment ideal for fitness, relaxation and healing. xStream® combines the best aspects of swimming pools, hot tubs and home gyms. Whether it's to shape your body, soothe your soul or transform your backyard into an oasis of tranquility, xStream® is the ultimate warm water fitness experience.



Swim Training

Swimming has long been known as the ultimate zero-impact exercise and is widely prescribed by physicians for their patients who want to get in shape or tone their body. xStream employs an impressive water propulsion system that works in concert with its open floor plan design. The observation seats and well marked swim lanes provide the optimum swim training center for your entire family.



Aerobic Training

A wide variety of aerobic exercises are possible in a xStream. Aqua jogging is especially effective as the deep water neutralizes the effects of gravity while increasing resistance for an amazing low impact workout. In addition, fitness experts recommend a warm water fitness regime to maximize weight loss.

Toning and Sculpting

Your xStream can be equipped with an aquatic exercise equipment package that features modern resistance band technology. Attach the resistance bands to the connector rings on the xStream to perform a complete toning program. Whether you are looking to tone, strength train or add muscle mass, the xStream will maximize your results through efficient heat dissipation and the comfortable warm water environment.



Flow and Jet power

Six strategically placed PowerSwim™ jets provide variable levels of intensity to match the users' ability levels and resistance requirements. Deep water jets create a complete resistance pattern that ensures a smooth stream of water throughout the depth of the xStream making swimming and aqua-jogging a pleasure.

Swimmers receive additional benefit from the lower PowerSwim™ jets which propel water in an upward and outward angle that provides "lift" as well as flow. These same jets provide resistance to aqua-joggers lower legs making every workout more effective.



XSR

**Seating:** 7

Size (LxWxH):
144" x 90" x 50"
366 x 228 x 127 cm

Weight Dry/Wet:

2200 / 14808 lbs.
998 / 6717 kg

Gals/Liters:

1576 / 5968

Pumps:

Pump 1 6.0bHp, 2Sp
Pump 2 6.0bHp, 2Sp
Pump 3 6.0bHp, 2Sp

Jets:

6 Turbo stainless steel swim jets
70 Hydrotherapy Jets
4 Trevi Fountain Jets

Options

- Ozone
- CleanZone™ II
- Floating Remote
- Sony Stereo System

XSP

**Seating:** 2 spa seats

Size (LxWxH):
198" x 90" x 53"
501 x 228 x 135 cm

Weight Dry/Wet:

3000 / 15,800 lbs.
1361 / 7167 kg

Gals/Liters:

1600 / 5956

Pumps:

Pump 1 6.0bHp, 2Sp
Pump 2 6.0bHp, 2Sp
Pump 3 6.0bHp, 2Sp

Jets:

30 Hydrotherapy jets
6 Turbo stainless steel swim jets
6 Trevi Fountain Jets

Options

- Ozone
- CleanZone™ II
- Floating Remote
- Sony Stereo System

XSL

**Seating:**

1 Sun Chaser Wet Deck

Size (LxWxH):

198" x 90" x 53"
501 x 228 x 135 cm

Weight Dry/Wet:

2750 / 14,750 lbs.
1247 / 6690 kg

Gals/Liters:

1500 / 5678

Pumps:

Pump 1 6.0bHp, 2Sp
Pump 2 6.0bHp, 2Sp

Jets:

4 Turbo stainless steel swim jets
6 Trevi Fountain Jets

Options

- Ozone
- CleanZone™ II
- Floating Remote
- Sony Stereo System

XSD

**Seating:** 2 spa seats

Size (LxWxH):
198" x 90" x 53"
501 x 228 x 135 cm

Weight Dry/Wet:

3000 / 15,800 lbs.
1361 / 7161 kg

Gals/Liters:

1500 / 5678 (swim area)
100/378 (spa)

Pumps:

Pump 1 6.0bHp, 2Sp
Pump 2 6.0bHp, 2Sp
Pump 3 6.0bHp, 2Sp

(spa)

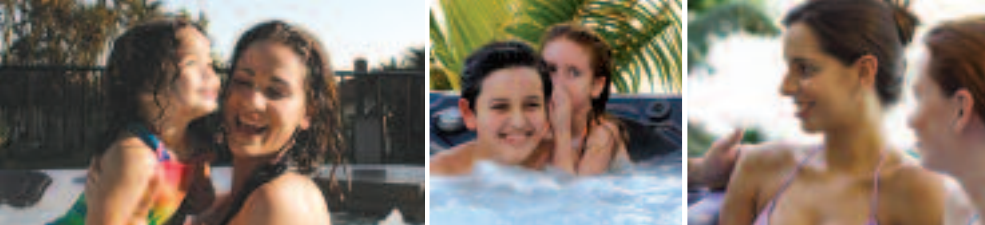
Pump 4 6.0bHp, 2Sp

Jets:

30 Hydrotherapy jets
6 Turbo stainless steel swim jets
6 Trevi Fountain Jets

Options

- Ozone
- CleanZone™ II
- Floating Remote
- Sony Stereo System



Model features and options

| 700 series Model | Mystique | Rendezvous | Cabaret | Nuage | Chateau | Fontaine |
|---------------------------------|----------|------------|---------|-------|---------|----------|
| 24-Hour Filtration (Circ Pump) | • | • | • | • | • | |
| AquaGlo | • | • | • | • | • | • |
| Ozone | • | • | • | • | • | • |
| Excel-X™ (Simulated Wood) | • | • | • | • | • | • |
| Freeze Protection | • | • | • | • | • | • |
| Vital Energy Insulation System™ | • | • | • | • | • | • |
| Jets | 60 | 71 | 54 | 44 | 45 | 51 |
| No Blame™ Heater | • | • | • | • | • | • |
| Perma-Shield™ Bottom Pan | • | • | • | • | • | • |
| Premier Styled Cover | • | • | • | • | • | • |
| SenFlo™ (Foot & Wrist Massage) | • | • | • | • | • | • |
| Water features | 2 | 2 | 2 | 2 | 2 | 2 |
| Champagne Air | • | Opt | Opt | Opt | Opt | |
| Symphonic Wave Seat | • | • | | | | |
| Third Pump | • | • | | | | • |
| VitAroma™/Aromatherapy | • | • | • | • | • | |
| VitaTunes | Opt | Opt | Opt | Opt | Opt | |
| Bluetooth Stereo | | | | | | Opt |
| Stainless Steel Jets | • | • | • | • | • | • |
| CleanZone™ II | Opt | Opt | Opt | Opt | Opt | Opt |

| 500 series Model | Joli | Ernie | Grand | Prestige | Monarque | Trio |
|---------------------------------|------|-------|-------|----------|----------|------|
| 24-Hour Filtration (Circ Pump) | Opt | Opt | Opt | Opt | Opt | |
| AquaBurst Plus™ | • | • | • | • | • | • |
| Ozone | Opt | Opt | Opt | Opt | Opt | Opt |
| Excel-X™ (Simulated Wood) | • | • | • | • | • | • |
| Freeze Protection | • | • | • | • | • | • |
| Vital Energy Insulation System™ | • | • | • | • | • | • |
| Jets | 44 | 54 | 53 | 52 | 49 | 19 |
| No Blame™ Heater | • | • | • | • | • | • |
| Perma-Shield™ Bottom Pan | • | • | • | • | • | • |
| Premier Styled Cover | • | • | • | • | • | • |
| SenFlo™ (Foot & Wrist Massage) | • | • | • | • | • | • |
| Water features | 2 | 1 | 1 | 1 | 1 | 0 |
| Champagne Air | Opt | Opt | Opt | Opt | Opt | Opt |
| VitAroma™/Aromatherapy | Opt | Opt | Opt | Opt | Opt | Opt |
| Surround Sound MP3 Stereo | Opt | Opt | Opt | Opt | Opt | |
| Stainless Steel Jets | • | • | • | • | • | • |
| CleanZone™ II | | Opt | Opt | Opt | Opt | |

| 300 series Model | Elegant | Intrigue | Amour | Duet | Cirque |
|--------------------------------|---------|----------|-------|------|--------|
| Excel-X™ (Simulated Wood) | • | • | • | • | • |
| Freeze Protection | • | • | • | • | • |
| Vital Energy Insulation System | • | • | • | • | • |
| Jets | 39 | 33 | 23 | 15 | 16 |
| No Blame™ Heater | • | • | • | • | • |
| Perma-Shield™ Bottom | • | • | • | • | • |
| Premier Styled Cover | • | • | • | • | • |
| AquaBurst Plus™ | • | | | | |
| AquaBurst™ | • | • | • | • | • |
| Ozone | Opt | Opt | Opt | Opt | Opt |
| Water features | 1 | 1 | 1 | 1 | 1 |
| Surround Sound MP3 Stereo | Opt | Opt | | | |
| VitAroma™ / Champagne Air | Opt | Opt | Opt | | |
| Circ Pump | Opt | Opt | | | |
| Stainless Steel Jets | • | • | • | Opt | • |



| 100 series Model | Image | Forte | Voeux |
|--------------------------------|-------|-------|-------|
| Thermo-Plastic Siding | • | • | • |
| Freeze Protection | • | • | • |
| Vital Energy Insulation System | • | • | • |
| Jets | 22 | 22 | 27 |
| No Blame™ Heater | • | • | • |
| Premier Styled Cover | • | • | • |